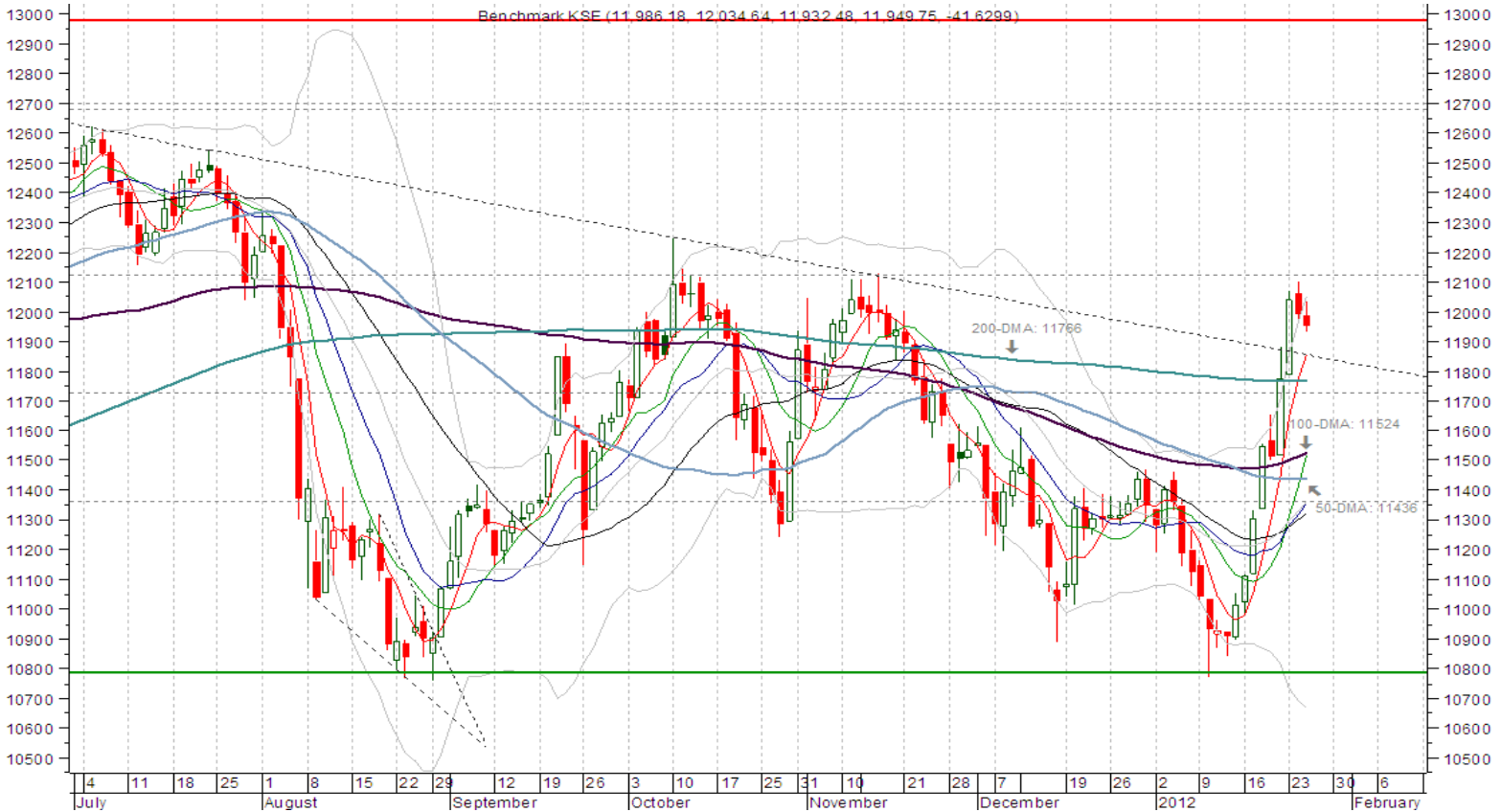




## KSE 100-INDEX

CLOSE	HIGH	LOW	CHANGE	14-day RSI	50-DMA	100-DMA	200-DMA
11,949.75	12,034.64	11,932.48	-41.63(0.35%)	68.30	11,436.31	11,524.01	11,766.48



### SUPPORT LEVELS

- S1: 11,869
- S2: 11,782
- S3: 11,728

### RESISTANCE LEVELS

- R1: 11,967
- R2: 12,097
- R3: 12,281

### Technical Profile

Immediate: Corrective  
Short-term: Positive

## Throwback To Seek Support Around 11869

The benchmark KSE continued to ease lower for the second straight session on profit-taking at overbought levels. Ensuing throwback from 12100 could seek support around 11869. Short-term technical picture is assumed bullish above 11685~11500 base area. Strength past 12097 would sight possibility for 12466 and 12764 levels.

**Strategy:** Buy at weakness to 11869 and 11685 levels, placing short-term term risk below 11500.

## StockSnap

Ticker	Close	Previous Close	% Chg	Volume	RSI(14)	5-DMA	10-DMA	15-DMA	30-DMA	50-DMA	100-DMA	200-DMA	250-Day High	250-Day Low	Minor-Trend	Daily PIVOTS						
																S1	S2	S3	PIVOT	R1	R2	R3
AICL	51.34	52.81	(2.78)	84,273	66.18	51.23	49.82	48.78	46.51	45.61	47.64	54.87	93.90	38.82	Positive	50.49	49.65	48.29	51.85	52.69	54.05	54.89
ABL	61.14	60.6	0.89	47,646	65.44	59.73	57.61	56.97	56.33	57.81	60.05	60.11	66.99	51.18	Positive	60.49	59.85	59.19	61.15	61.79	62.45	63.09
ATRL	122.37	121.81	0.46	1,697,679	71.23	119.11	113.72	112.01	110.58	114.02	114.60	118.83	141.58	96.25	Positive	120.38	118.39	117.08	121.69	123.68	124.99	126.98
ANL	3.52	3.98	####	3,697,792	56.79	3.66	3.30	3.17	3.14	3.27	3.94	4.96	12.37	2.75	Positive	3.29	3.05	2.70	3.64	3.88	4.23	4.47
BAHL	31.99	31.74	0.79	213,008	80.34	31.20	30.34	29.85	29.07	29.23	29.38	29.13	32.15	26.88	Positive	31.36	30.72	30.33	31.75	32.39	32.78	33.42
BAFL	12.29	12.15	1.15	7,607,402	70.45	11.98	11.67	11.60	11.49	11.61	11.18	10.72	12.65	8.75	Positive	12.07	11.85	11.58	12.34	12.56	12.83	13.05
DGKC	23.18	22.11	4.84	13,889,461	81.09	21.79	20.88	20.49	19.75	20.02	20.50	21.72	28.54	17.90	Positive	22.53	21.88	21.54	22.87	23.52	23.86	24.51
EFUG	40.5	40.8	(0.74)	8,494	66.60	39.96	39.36	39.02	37.46	37.06	36.25	35.10	43.75	29.01	Positive	40.17	39.83	39.17	40.83	41.17	41.83	42.17
ENGRO	114.1	116.09	(1.71)	4,344,460	66.61	109.71	103.84	100.95	98.70	108.15	118.49	142.82	204.40	90.25	Positive	111.97	109.83	106.62	115.18	117.32	120.53	122.67
FFC	176.18	175.41	0.44	3,295,198	68.02	174.04	169.16	165.07	159.15	161.94	163.40	150.17	194.90	93.25	Positive	174.99	173.79	172.09	176.69	177.89	179.59	180.79
FFBL	49.03	50.03	(2.00)	3,456,080	60.48	48.77	46.61	45.24	45.41	48.27	51.19	44.51	61.30	28.85	Positive	48.42	47.80	46.80	49.42	50.04	51.04	51.66
HBL	115.93	116.41	(0.41)	54,194	68.54	113.26	110.27	109.32	108.68	110.31	112.45	114.49	123.80	95.23	Positive	114.97	114.01	112.32	116.66	117.62	119.31	120.27
HMB	18	17.98	0.11	55,691	71.68	17.60	17.31	17.23	16.99	17.14	17.54	18.11	23.08	15.66	Positive	17.55	17.11	16.86	17.80	18.24	18.49	18.93
HUBC	36	35.74	0.73	3,170,502	64.38	35.28	34.56	34.31	34.50	35.39	36.44	35.68	40.76	30.40	Positive	35.60	35.20	35.00	35.80	36.20	36.40	36.80
ICI	147.66	148.13	(0.32)	15,788	74.83	146.97	140.63	136.79	127.49	127.01	132.02	140.55	157.50	111.11	Positive	145.98	144.29	142.54	147.73	149.42	151.17	152.86
INDU	224.62	219.17	2.49	420	74.48	217.62	214.25	213.20	208.53	206.21	203.39	205.42	294.73	182.00	Positive	221.93	219.23	217.70	223.46	226.16	227.69	230.39
JSCL	6	6.61	(9.23)	14,959,683	68.82	5.96	5.14	4.78	4.49	4.86	5.24	6.08	12.17	3.90	Positive	5.73	5.47	5.02	6.18	6.44	6.89	7.15
KAPCO	42	41.6	0.96	203,273	66.35	41.23	40.56	40.39	40.66	40.95	41.26	40.14	44.88	34.50	Positive	41.45	40.90	40.50	41.85	42.40	42.80	43.35
LUCK	85.77	84.98	0.93	4,269,481	73.09	83.55	81.21	79.91	78.58	79.48	77.68	72.61	87.10	55.55	Positive	84.85	83.93	83.16	85.62	86.54	87.31	88.23
MCB	168.05	169.42	(0.81)	489,180	78.01	163.49	156.24	152.57	145.86	147.67	156.49	173.55	204.27	133.00	Positive	166.80	165.56	163.61	168.75	169.99	171.94	173.18
MARI	93.36	89.9	3.85	356,923	71.68	89.08	87.56	86.99	85.51	88.17	88.17	84.84	106.33	66.20	Positive	90.92	88.47	86.95	92.44	94.89	96.41	98.86
MEBL	22.33	21.54	3.67	1,884,448	74.65	21.53	20.13	19.56	18.74	18.92	19.21	18.14	22.89	13.87	Positive	21.68	21.04	20.57	22.15	22.79	23.26	23.90
NRL	242.91	244.32	(0.58)	86,878	53.45	242.12	233.51	229.81	234.55	253.08	295.61	311.46	374.00	215.00	Positive	241.32	239.74	237.97	243.09	244.67	246.44	248.02
NBP	45.02	45.36	(0.75)	3,077,853	62.29	43.60	42.89	43.19	42.18	42.23	43.34	47.45	59.42	34.86	Positive	44.66	44.31	43.71	45.26	45.61	46.21	46.56
NIB	1.7	1.71	(0.58)	1,012,992	61.49	1.68	1.68	1.68	1.58	1.48	1.44	1.54	2.99	1.21	Positive	1.68	1.67	1.63	1.72	1.73	1.77	1.78
NML	46.96	46.07	1.93	2,859,406	74.26	45.41	43.31	42.48	41.69	41.92	43.29	47.20	65.00	34.80	Positive	45.84	44.72	43.74	46.82	47.94	48.92	50.04
OGDC	149.66	151.87	(1.46)	399,873	54.13	150.91	146.07	142.90	147.88	149.98	141.56	141.23	170.30	115.15	Positive	148.62	147.58	145.95	150.25	151.29	152.92	153.96
PKGS	78.48	79.63	(1.44)	17,500	44.95	79.34	78.95	79.49	79.71	80.95	89.89	99.54	139.75	68.01	Negative	77.82	77.16	76.32	78.66	79.32	80.16	80.82
POL	365.37	366.1	(0.20)	1,850,497	61.90	365.03	357.55	353.94	353.00	355.29	351.68	336.57	376.25	252.09	Positive	362.84	360.31	357.63	365.52	368.05	370.73	373.26
PAKRI	16.52	16.76	(1.43)	138,178	64.01	16.53	16.28	16.10	15.52	15.52	15.53	15.64	18.30	10.80	Positive	16.36	16.19	15.89	16.66	16.83	17.13	17.30
PSO	252.48	252.89	(0.16)	396,347	67.48	250.09	243.25	239.77	235.68	239.36	241.79	252.35	298.00	202.50	Positive	250.65	248.82	246.62	252.85	254.68	256.88	258.71
PAKT	52.99	53.14	(0.28)	11,500	28.50	52.58	52.54	53.51	55.85	59.81	71.97	86.13	124.40	0.00	Negative	52.99	52.98	52.98	52.99	53.00	53.00	53.01
PPL	178.26	180.82	(1.42)	1,171,982	63.04	178.28	172.64	170.52	170.05	171.81	178.01	181.64	198.95	160.00	Positive	175.95	173.63	170.01	179.57	181.89	185.51	187.83
PTC	11.7	11.65	0.43	1,483,008	75.65	11.37	10.94	10.67	10.38	10.44	10.86	12.48	17.85	9.82	Positive	11.56	11.42	11.33	11.65	11.79	11.88	12.02
SNGP	16.04	16.02	0.12	308,985	47.88	16.09	16.00	15.97	15.99	16.47	16.96	17.18	26.30	14.34	Positive	15.98	15.91	15.83	16.06	16.13	16.21	16.28
UBL	57.66	58.63	(1.65)	507,265	62.82	56.31	54.87	54.50	53.82	55.24	56.54	58.59	64.45	51.01	Positive	56.84	56.01	54.76	58.09	58.92	60.17	61.00

\*\*Minor-Trend signals are based on the 5,10, and 15 day moving averages crossover system