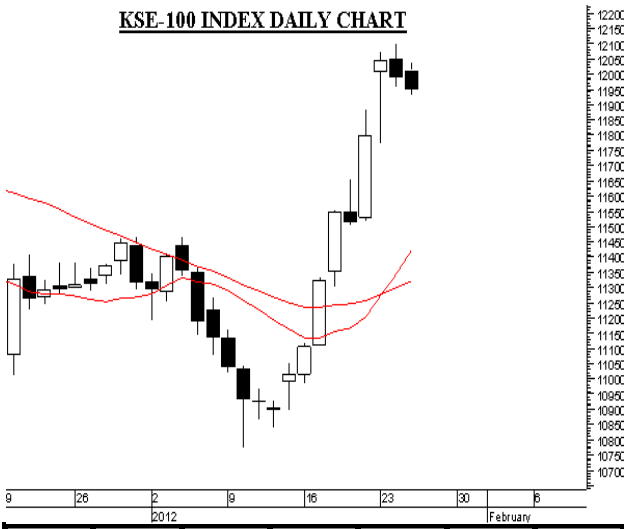


**KSE-100 INDEX DAILY CHART**



**REVIEW:**

On Wednesday market started its direction with a volatile trend. Market showed support near the level of 11,970 points. After that market entered into the positive region and made its highest level at 12,034.64 points. Market could not sustain that level for much longer time and showed a declining trend. Near the end of the session market showed more declining trend and its lowest level was 11,932.48 points. Market closed at the level of 11,949.75 points, volumes were 124.848 million shares. Today market looks to continue the downward side trend. The support should be near the level of 11,850 points.

S3	S2	S1	R1	R2	R3	CL.

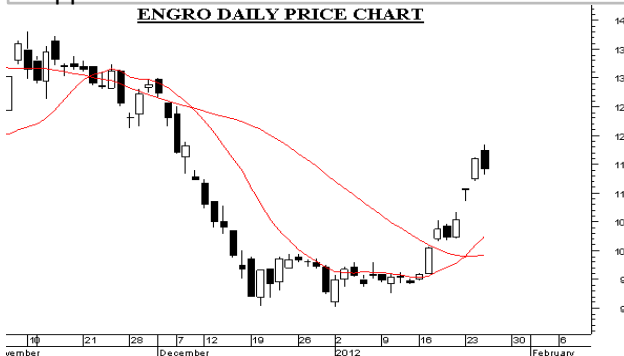
**BAFL DAILY PRICE CHART**



**BAFL CLOSING: 12.29**

The resistance level of BAFL is at Rs. 12.70 and support level at Rs. 12.

**ENGRO DAILY PRICE CHART**



**ENGRO CLOSING: 114.10**

The resistance level of ENGRO is at Rs. 117 and support level at Rs. 112.

**MARKET HIGHLIGHTS:**

KSE-100 Index Volume	93,819,465
KSE-100 Index	11949.75
Net Change	-41.63
Gainners	106
Lossers	136
Equal	93
Total	335

**TOP FIVE VOLUME LEADERS**

SCRIPS	PRICE	Δ IN PRICE	VOLUME
JSL	6.00	-0.61	14,959,683
DGKC	23.18	1.07	13,889,461
BAFL	12.29	0.14	7,607,402
LOTPTA	10.04	0.01	7,443,761
ENGRO	114.1	-1.99	4,344,460

**TOP FIVE FUTURE SCRIPS VOLUMEWISE**

SCRIPS	PRICE	Δ IN PRICE	NO. OF CONT.
ENGRO-JAI	114.27	-1.95	2,906
DGKC-JAN	23.21	1.10	2,382
ENGRO-FEI	115.31	-1.11	2,283
DGKC-FEB	23.43	1.11	2,178
FFBL-JAN	49.00	-1.11	1,364

FIPI	Gross Buy	Gross Sell	Net Buy/(Sell)
25-Jan	294,486,431	(136,856,916)	157,629,515
Jan 1 to Date	3,492,592,795	(3,911,658,582)	(419,065,782)
Dec-11	3,293,801,657	(3,657,984,486)	(364,182,828)
Jan 1 to Date	3,492,592,795	(3,911,658,582)	(419,065,782)

**Rafi Securities (Pvt) Limited**

UAN : 111 - 159 - 111 , Email: research@rafionline.com

1004, 10th Floor Al - Rahim Tower , I. I. Chundrigar Road - Karachi

DISCLAIMER: This report has been prepared by Rafi Securities (Pvt) Ltd. for information purpose only. Under no circumstances the contents of the report are to be used or considered as an offer to sell or a solicitation of any offer to buy.